

Implantech[®]
Superior Patient Aesthetics

NEWS FOR YOUR PRACTICE

OCTOBER 2022
800.733.0833 | implantech.com

SPOTLIGHT ON

Mandibular Pre Jowl[®] Implant

Augmenting the pre-jowl sulcus

PICTURES SPEAK VOLUMES

Check out some before-after photos

TRAINING WORKSHOPS

Sign up for updated class schedules

FANCY MEETING YOU

Meetings where we hope to see you!

ContourFlex[™] Calf Implants

*For natural-looking
outcomes*



Solid silicone implants provide shapely augmentation

When neither exercise nor diet can achieve a desired lower-leg appearance, Implantech has the solution.

Our ContourFlex[™] implants are made of solid yet soft silicone to mimic large calf muscles, providing augmentation with shaped volume and smoothed edges.

For men, this means a more muscular-looking calf, while woman benefit from a more curvaceous shape.

The Mandibular Pre Jowl[®] Implant

*For augmenting the groove
between chin and jowl*

As a result of progressive atrophy of soft tissue in the area between the chin and jowl—and the gradual bone reduction of the mandible in this same area—a patient may develop a groove or *pre-jowl sulcus*.

Though a facelift can tighten this area, the sulcus often remains post-operatively.

The Solution – Implantech's **Mandibular Pre Jowl[®] implant**.



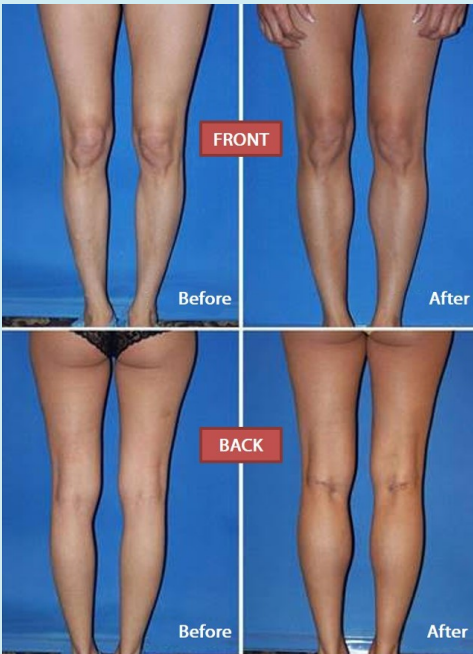
The Mandibular Pre Jowl[®] features shaped lateral wings and a flat anterior connector.

So designed, the implant augments the aging pre-jowl sulcus for a more youthful look with no anterior chin projection.

Many surgeons have commented that they use the Mandibular Pre-Jowl[®] implant in almost every facelift to maintain the defined lateral jawline following the lift.



Male patient with calf implants
Photos courtesy of Sam Gershenbaum, DO



Female patient with calf implants
Photos courtesy of Sam Gershenbaum, DO

Choose from three distinct styles, all of which enable the most natural-looking patient outcomes and each trimmable for a more patient-specific fit.

ContourFlex™ Calf Implant

ORIGINAL SMOOTH STYLE



Adds mass and definition to the calf. Choose this or any style for aesthetics or to help correct deformity from trauma or disease.

The Placement



As noted in his [2008 article](#), James R. Shire, MD, FACS, states, "Placement of the prejowl...is through a submental incision, and is usually performed during the face-lift surgery."

Take a look at Dr. Shire's description of his surgical technique, and how critical he believes this implant to be for the aging patient's satisfaction.

The Result



Photos courtesy of Ryan Diepenbrock, DDS, FAACS

Contact Implantech for more information about the Mandibular Pre Jowl® implant or any of our superior products.

STAY TUNED!

We'll soon have 2023 dates for our popular hands-on cadaver workshop!



Advanced Techniques
 Using Facial & Body-Contouring Implants

ContourFlex™ Calf Implant

AIACHE STYLE



- Choose textured or smooth surface
- Large variety of sizes to ensure desired shape
- Soft durometer

ContourFlex™ Calf Implant

CARLSEN STYLE



- Choose textured or smooth surface
- Available in both left and right forms
- Soft durometer

Check out this [calf augmentation technique video](#) from J. Howell Tiller, MD.

Don't hesitate to [contact us](#) for more information about Implantech's high-quality ContourFlex™ calf implants.



Did you
KNOW?

You can place your orders online!

Just register on our website (USA only)

IMPLANTECH | implantech.com



IMP-642/1022